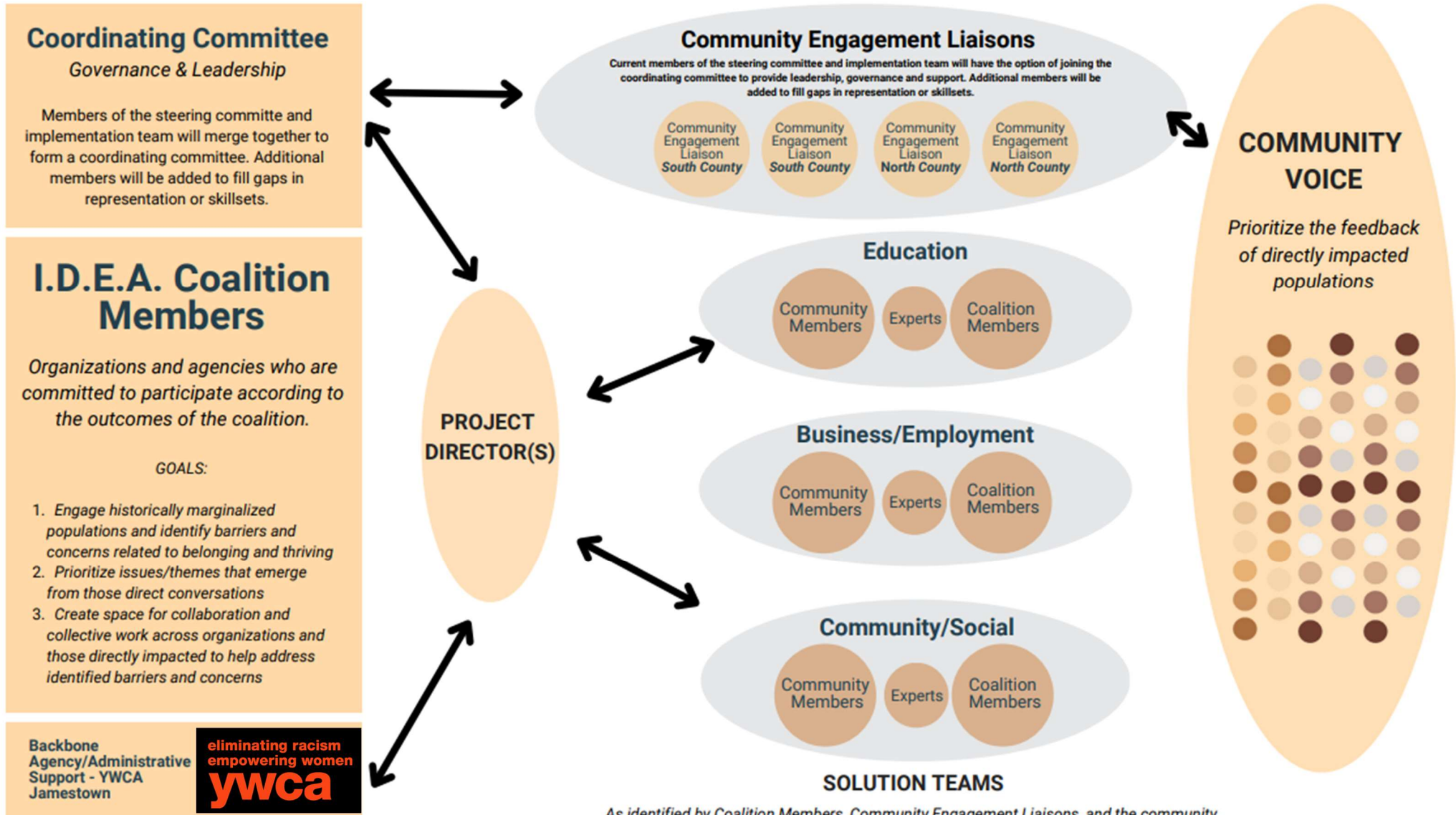


CHAUTAUQUA COUNTY I.D.E.A. COALITION

Organizational Chart

The CHQ County I.D.E.A. Coalition is designed to address, prioritize, and give voice to concerns of those individuals that have been historically marginalized and directly impacted by such things as racism and social injustice in our community. It serves as a bridge between impacted populations and the various organizations that provide services within Chautauqua County. It is also committed to both anti-racist and broad social justice work.



As identified by Coalition Members, Community Engagement Liaisons, and the community.